

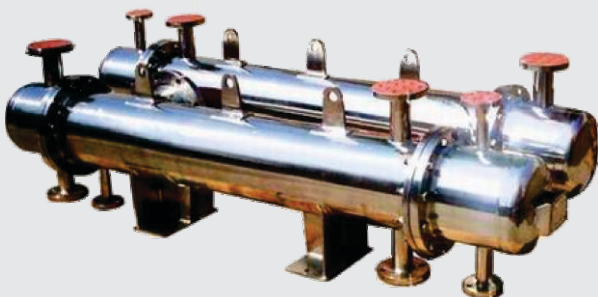


Yesha Engineering

Engineering Solution Provider



Design & Manufacturing of
Pharmaceuticals Equipment
Chemical Equipment
Petro Chemical Equipment
Structure & Piping, Agrochemicals &
Special Type Fab Job etc.



Address

183, G.I.D.C. Industrial Estate, Makarpura
Nr. Matrix Telecom, Vadodara - 390010.
Email : yeshaengineering@hotmail.com
Ajay Patel - M : 0987 979 0931.

INTRODUCTION



We are team of experienced and well qualified engineers having excellent track record in the field of designing and manufacturing of Pressure Vessels, Shell & Tube Type that Heat Exchangers and other chemical pharma, oil & gas equipments.

QUALITY POLICY



YESHA ENGINEERING is committed to Delight Customers by Designing, Manufacturing and Supplying process equipment and Pressure Vessels as per Customer Specific Process requirements and designing codes.

We are further committed to develop a motivated workforce with a sense of pride in organization with continual improvement in our performance to meet customer expectations at all the time.

VISION



To be known as country's one of the welknown Pressure Vessel and Heat Exchanger manufactures, Most innovative and viable techno-economical solutions provider to our customers.

MISSION



Integrate and flourish to be known as a Technology driven company, innovating customized solutions to exceed our customer's expectations in quality, delivery and cost through continual improvement and customer interaction. To become the most preferred Pressure Vessel manufacturer.



PHARMA PRODUCT

Design and Manufacturing by Pressure Vessel, Receiver, ML Tanks, Storage Tank, Reactor (GMP/NGMP), Agiator, Heat Exchanger, Vacuum Trap, Nutch Filter etc.



CHEMICAL PRODUCT

Design and Manufacturing by Pressure Vessel, Air Receiver, Storage Tank, Reactor, Heat Exchanger, Vessel, Column etc.



PRODUCT CODES & STANDARDS

ASME Sec. VII Div. 1 TEMA, GMP

OTHER PRODUCT

Reactor Jacket Replacement, Heat Exchanger Re Tubing, Piping Spool Piece, Internal Coil Manufacturing, Reactor Agitator Modification, Reactor Impeller, Reactor Manhole & Light Sight Glass .

PRODUCT MATERIAL OF CONSTRUCTION

Stainless Steel : SS 304 / SS 304 L / SS 316 / SS 316L, Duplex & Super Duplex, Carbon Steel

Surface Preparation : Pharma Product Mirror 240 Grit & 180 Grit Buffing S.S Parts Pickling & Passivation Carbon Steel Tank Color as per customer requirement.



PRODUCT SCOPE

Mechanical Design of the Static Equipment, Preparation Detail Fabrication Drawing for Equipment, Preparation of Various Applicable Procedure, All Material Test Certificate for Equipment, Welding and Testing as per Codes.



CLIENT LIST

Our Customers are involved in a diverse range of industrial activity. Some of the valued customers across multiple industrial segments are as mentioned below

- Rubamin Limited (Halol)
- Sterling Biotech Limited
- Alembic Limited (Shreno Ltd.)
- Dupont India Pvt. Limited
- Rubamin Limited (Nandesari)
- Sudeep Pharma Limited
- Excel Industries

WELDING FACILITY

Yesha Engineering is equipped for all kind of welding Equipments to Facilitate Welding of Variety of Materials Like SS-304 / 316 / 310, CS, Duplex 2205 Etc.

TIG Welding Machines :	Cap 400 Amps	4 Nos.
MIG Welding Machines :	Cap 400 Amps	2 Nos.
ARC Welding Machines :	Cap 400 Amps	2 Nos.
Air Plasma Machines	Cap 30 mm Thk	1 nos.
Pipe Cutting Machines :	Cap 14"	1 Nos.
Mother Ovens :		2 Nos.
Portable Ovens :		2 nos.

WELDING PROCESSES USED IN YESHA ENGINEERING

Shielded Metal Arc Welding	(SMAW)
Gas Tungsten Arc Welding	(GTAW)
Gas Metal Arc Welding	(MIG & FCAW)

QUALITY ASSURANCE

Internal Testing Facility

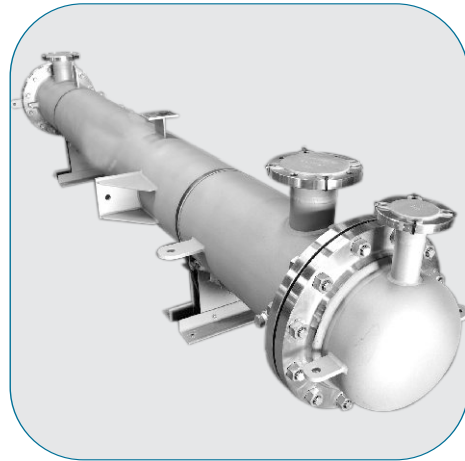
Material Product Testing
Dimension Verification
Dye Penetration Testing 100%
Hydro & Pneumatic Testing
Surface Roughness Testing
Painting DFT Testing

External Testing Agencies

Material Testing : Met Heat Lab\
Physical Property Testing
Chemical Property Testing
Magnetic Particle Testing
UT Testing
Radiography



JOB PHOTO



We have supplied these Tank, Receiver, Pressure Vessel, Reactor and Heat Exchanger to Pharma, Chemical, Petro-Chemical Industries across country. The various grades of material include SS-304 / 316 L, Carbon Steel. We have repairing & Modification Tank as per Requirement.

COMPANY AREA

7000 sq.ft with 8 ton crain capacity.



HEAT EXCHANGER & CONDENSER

Yesha Engineering is engaged in design & fabricating Shell & Tube type Heat Exchanger, designed as per the international standards. Our products are widely used in different application areas such as - Oil cooling, inter or after cooling, water to water cooling, inter or after cooling, water to water cooling and gas to gas cooling. Also, our products are offered in various designs like fixed tube sheet, floating head (removable bundle) and U-tube designs.

APPLICATIONS & INDUSTRY

Shell & Tube Type, U-Tubes, Condenser, Fixed Tube Sheets, Fin Tubes, Evaporator, Tube Bundles, Calandria

JOB PHOTO



The designs are in accordance with TEMA, ASME Section VIII Division 1, or Recommended good Engineering practice. We also offer our Product in standard. We have Re-Tubing Heat Exchanger & Condenser.

CODES & STANDARDS

ASME Sec. VIII Div. 1 TEMA

MATERIAL OF CONSTRUCTION

Stainless Steel : SS 304 / SS 316L, Duplex & Super Duplex
Exotic Material : Inconnel, Monel, Hastelloy Carbon Steel

SCOPE

Mechanical Design of the Heat Exchanger and Condenser Detail Fabrication Drawing for Approval Hydro Test and other NDT Test as per Requirement.

CHEMICAL & PHARMA REACTOR

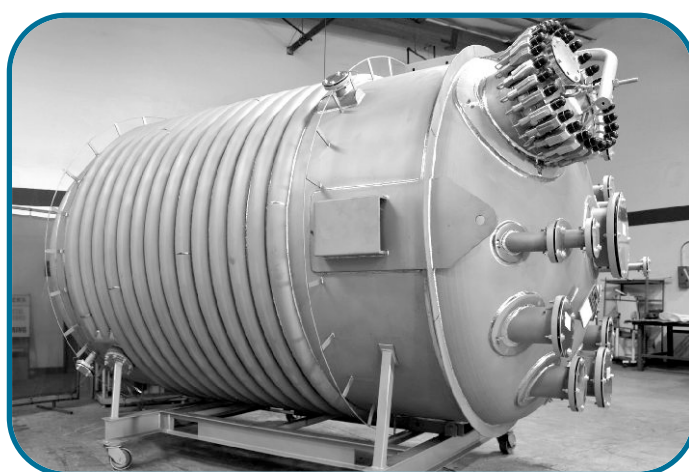
Yesha Engineering offer a complete solution and comprehensive package of services for Reactor projects that includes design and detail engineering & fabrication.

TYPE OF REACTOR

Pharma Reactor (GMP & NGMP), Chemical Reactor with Agitator Assembly

Agitator Type : Anchor, Turbine, Paddle, Propeller as per clients Requirements.

Heating / Cooling : Jacketed, Limpet Coil & Internal Coil



We have supplied this Reactor to Pharma Industries and Chemical Industries. The various grades of material include SS 304, 304 L/316, 316L & Carbon Steel. We have Repairing & Modification Reactor Jacket

Polishing : Pharma Reactor Mirror Polishing, Matt Finish as per client Requirement.

CODES & STANDARDS

ASME Sec. VII Div. 1. Good Engineering Practices.

MATERIAL OF CONSTRUCTION

Stainless Steel : SS 304 / SS 316L Duplex & Super Duplex Carbon Steel, Capacity Reactor : 50 Ltr. to 30 Kl, or can meet customers special requirement.

SCOPE

Mechanical Design of the Reactor Preparation Detail Fabrication Drawing for Approval, All Material Test Certificate for Reactor, Hydro test and other NDT Test As per Requirement.

PRESSURE VESSEL

Yesha Engineering has the expertise to carry out the complete design, Engineering, Fabrication for Pressure Vessel.

TYPE OF VESSEL

Scrubber, Test Separators, Surge Vessel, Pressure Vessel, All Types of Filter Vessel Knock out drums. Reactors with Agitator Column Receiver.

JOB

Our Engineering Department utilize the latest software for pressure vessel design and data sheet preparation. Our in house detailers prepare shop drawing, general arrangement drawing etc. We have repairing & modification tank as per requirement.



CODES & STANDARDS

ASME Sec. VII Div. 1. Good Engineering Practices.

MATERIAL OF CONSTRUCTION

Carbon Steel Stainless Steel : SS 304/SS 316L Duplex & Super Duplex

SCOPE

Mechanical Design of the Pressure Vessel, Preparation Detail Fabrication drawing for approval . Preparation of Various applicable procedure. All material test certificate for pressure vessel. Welding and testing as per Codes.



Yesha Engineering

Engineering Solution Provider

Address : 183, G.I.D.C. Industrial Estate, Makarpura , Nr. Matrix Telecom, Vadodara - 390010.

Email : yeshaengineering@hotmail.com, Ajay Patel - M : 0987 979 0931.